

F-50 CAST STEEL DRAINAGE GATE

USES:

Model F-50 Gates are designed for use in drainage, flood control, and similar projects with seating heads up to 50 feet and where slamming, tidal action, ice or debris may necessitate a gate with high resistance to damage from impact. A minimum 2½° seating angle assures that gates will not "hang open" even if pipe sags slightly or mounting is not on a perfectly vertical plane. This gate opens with minimum differential head, but ensures positive closing. Spigotback and flatback models are available.

FEATURES:

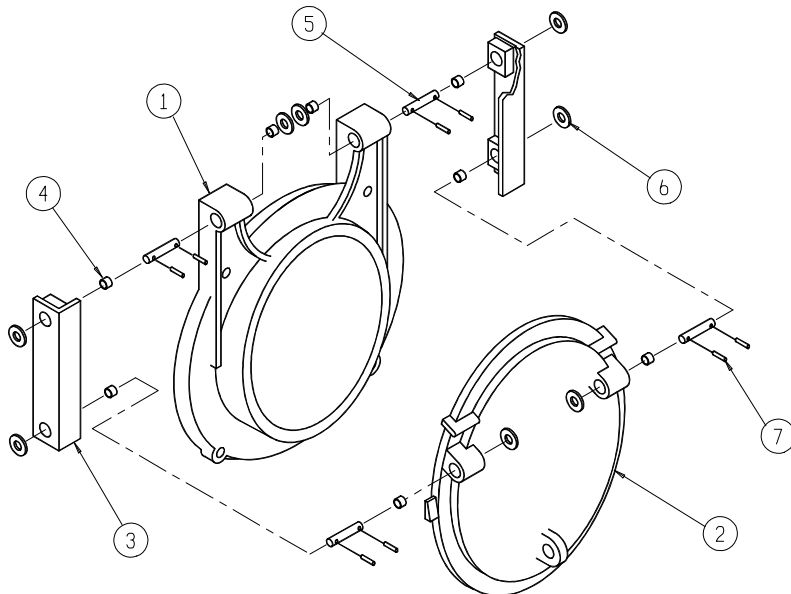
The frame and cover are commercial quality cast steel. Links are fabricated from heavy duty angle or steel flat bar with bronze hinge bushings. Hinge pins, washers and keepers are stainless steel.

The non-jamming design eliminates the need for additional bars or lugs. The lifting eye is cast as an integral part of the cover (flap).

Seating surfaces are machined steel, with bronze or stainless steel seat faces available as options. A neoprene dovetail seat face, recessed in the cover to minimize damage from debris, is an additional options.

Optional items:

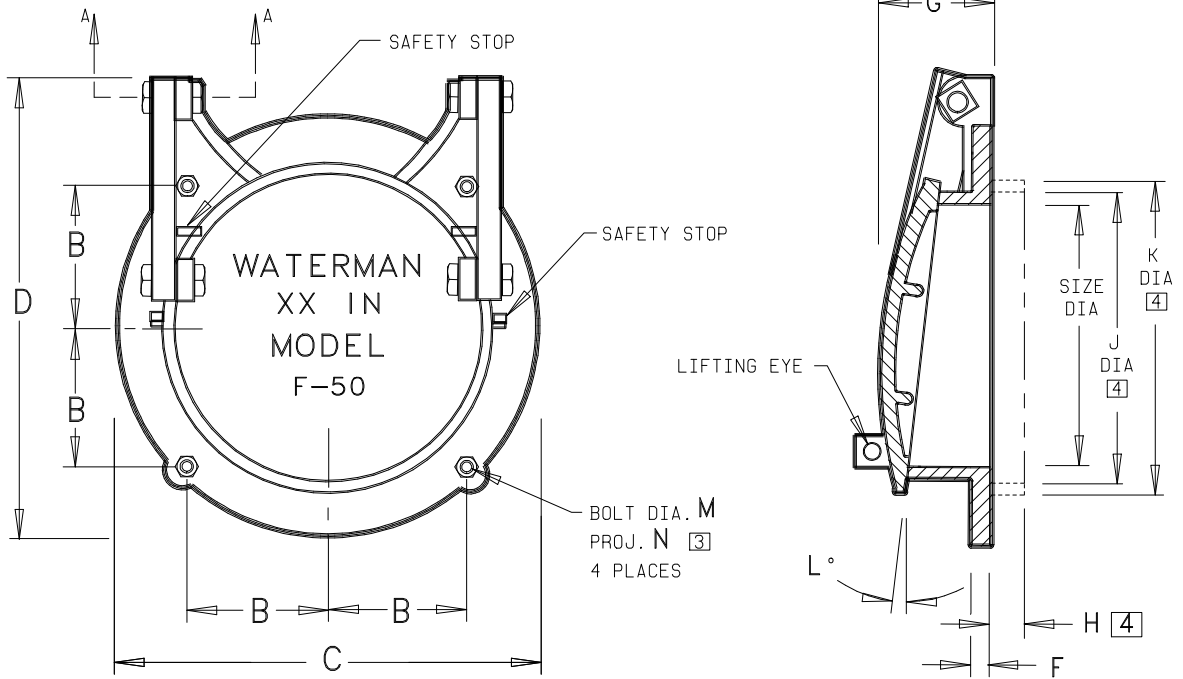
- Special paint, coatings, and galvanizing per ASTM A-123
- Bronze, stainless steel and neoprene cushion seat faces
- Galvanized or stainless steel anchor bolts



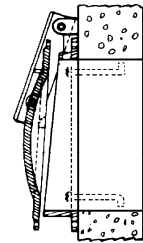
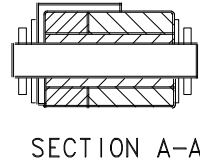
PARTS LIST		
No.	Name	Qty.
1	Frame	1
2	Cover	1
3	Hinge Links (Heavy Duty)	2
4	Hinge Bushings	4
5	Pivot Pin	4
6	Washer	4
7	Spring Pin	8

**50 Foot Seating Head
Cast Steel Design
Model F-50F - Flatback
Model F-50sb - Spigotback**

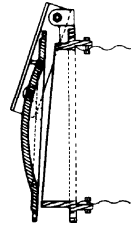
F-50 DRAINAGE GATE



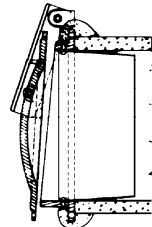
- 1. For use with seating heads to 50 feet.
- 2. Suitable for pump discharge use.
- [3] Add grout pad thickness to anchor bolt projection.
- [4] Applies to spigotback gate only. Spigot, shown in phantom, is optional.



**Flatback
(Head Wall Mounting)**



**Spigotback
(For Corrugated Metal Pipe)**



**With Setting Collar
(For Concrete Pipe)**

GATE DIMENSIONS ARE IN INCHES											
SIZE DIA.	B	C	D	F	G	H	J	K	L°	M	N
4	2½	6⅞	8½	¾	4⅞	2¼	5⅞	5⅞	5	⅝	1⅝
6	2⅜	8⅞	10	¾	4⅞	2¼	7⅞	7⅞	5	⅝	1⅝
8	3½	10	12	¾	4¼	2⅝	9⅞	9⅞	5	⅝	1⅝
10	4¾	12¼	14½	¾	4½	2¼	11⅞	11⅞	5	⅝	1⅝
12	5⅞	15	17⅞	¾	4½	2⅞	13⅞	13⅞	5	⅝	1⅝
14	5⅞	16⅞	19⅞	¾	4¾	2⅞	15⅞	15⅞	5	⅝	1⅝
15	6¼	18⅞	20	¾	5	2¼	16	16¾	5	⅝	1⅝
16	6⅞	18⅞	21⅞	7/16	5	2⅝	17	17¼	5	⅝	1⅝
18	7⅞	21	24⅞	7/16	5⅞	2⅞	19	19¼	5	⅝	1⅝
20	8¼	23⅞	26½	½	6	2¼	21⅞	21¼	5	¾	1⅝
21	8⅞	24	27½	½	7	2¼	22	22¾	5	¾	1⅝
24	9⅞	27½	32	½	7⅞	2¼	25	26½	5	¾	1⅝
30	12	34	39⅞	¾	6½	2⅞	31	32	2½	7/8	2
36	14⅞	40⅞	46	¾	8	2⅞	37	38	2½	7/8	2
42	16⅞	47⅞	55¼	¾	8	2½	43⅞	44⅞	2½	7/8	2
48	19⅞	54½	63⅞	¾	9⅞	3	49⅞	51⅞	2½	7/8	2
54	22⅞	60¼	71	7/8	9¾	3	55¼	57	2½	1⅞	2¾
60	24⅞	72	80⅞	1	10¼	3	61¼	62¼	2½	1⅞	2¾
72	29	83	95½	1⅞	11½	3⅞	74¼	76½	2½	1⅞	2¾