

PF-25 CAST IRON FLAP VALVES

- For Pump Discharge
- Flange Style Available in 4"-24"
- Compression Style in 4"-14"

Waterman Model PF-25 flap valves are designed for use on pump discharge lines and other pipe end closures to prevent entrance of back water. These valves are furnished with a variety of frame styles to fit most installation needs. A 7½° inclined seating plane is used to ensure that the valve will not "hang open" from slight pipe sagging or off grade. A positive stop prevents over opening.

The flange model (PF-25f) may be furnished with either iron or bronze seat faces. Bronze hinge pins are standard. Drilling is ANSI 125 lb. standard.

- Cast Iron Body
- Flange or Compression Mounted
- Cast Iron Cover
- Aluminum Cover Optional
- Cast Iron, Bronze or Resilient Seat Faces
- Bronze Hinge Pins
- 7½° Seating Plane

The popular compression Model PF-25W uses time proven wedge type seals to install quickly and easily on plain end standard steel pipe. A special gasket is furnished for use with O.D. sized steel pipe. This model is standard with a cast iron frame with machined seat face and a cast iron cover with a resilient neoprene rubber seat face. Follow ring is cast iron with rubber wedge gasket and plated steel draw bolts.

Valves are available with aluminum covers and neoprene seat faces where extra sensitivity is desired. Taper setting collars can be provided as an aid for installation on concrete pipe.

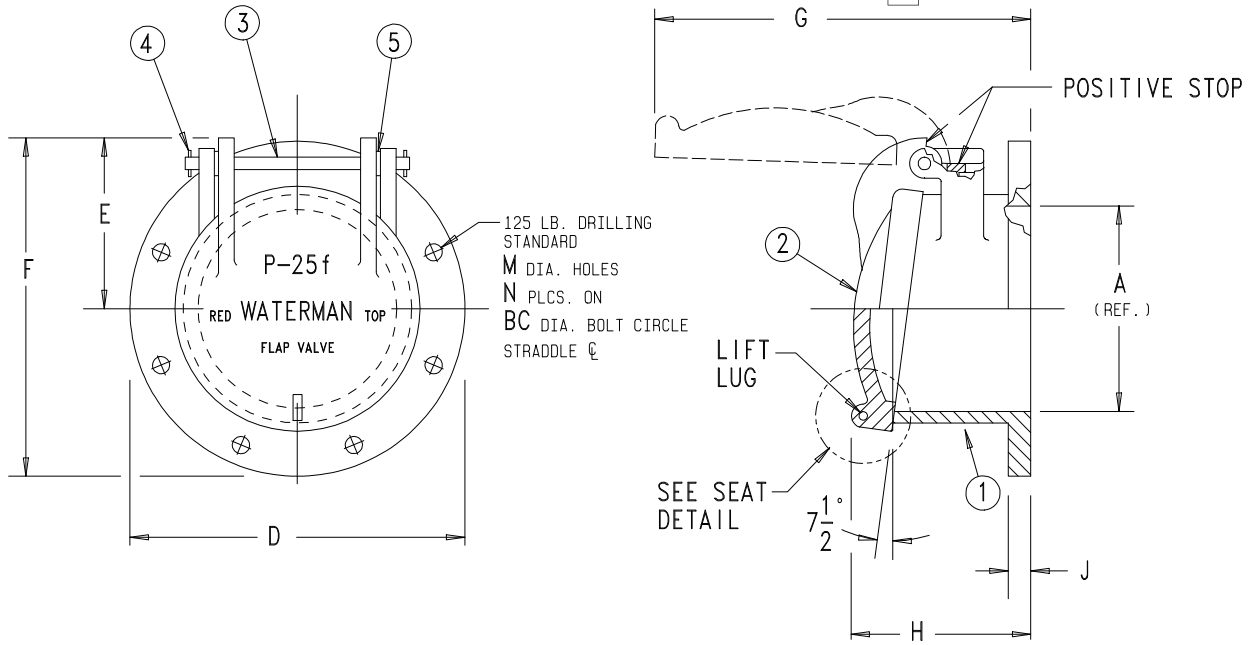


Model PF-25F
Flange Style



Model PF-25W
Compression Style

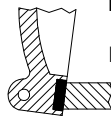
PF-25f FLAP VALVE



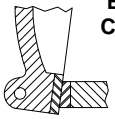
ALTERNATE SEATS AVAILABLE



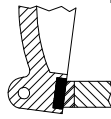
MACHINED IRON



**RESILIENT SEAT
IN COVER.
MACHINED IRON
SEAT BODY***



**BRONZE SEAT
COVER & BODY**



**RESILIENT SEAT
IN COVER.
BRONZE SEAT
IN
FRAME**

*standard configuration

3

PARTS LIST	
No.	Name
1	BODY(flanged)
2	COVER
3	HINGE PIN
4	SPRING PIN
5	WASHER

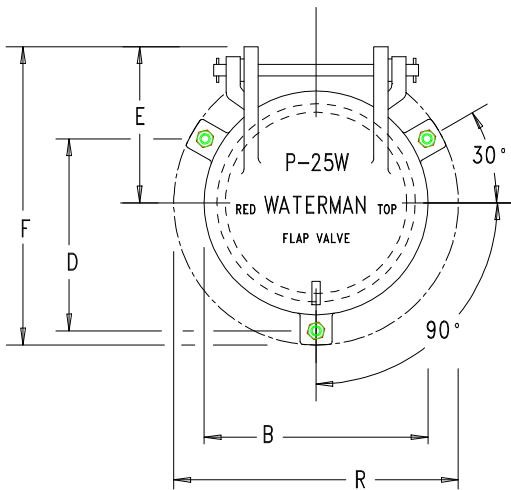
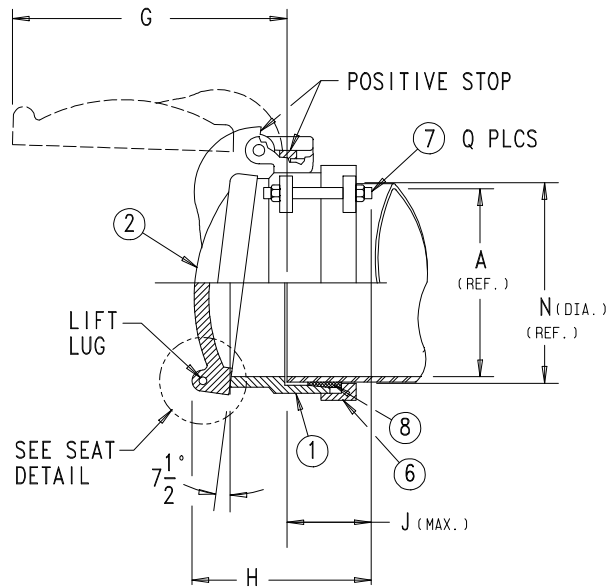
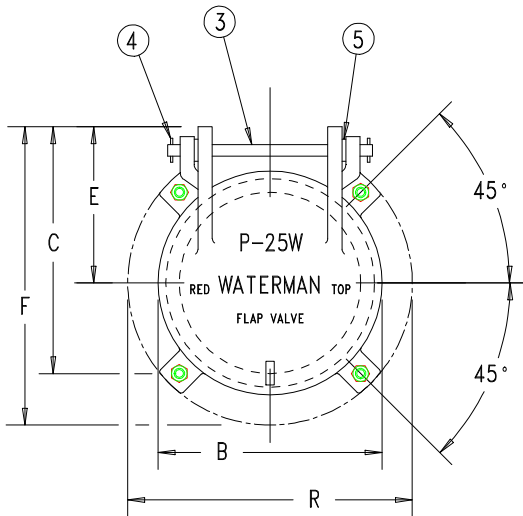
1. Designed for use on pump discharge lines.
2. 25 Lb. drilling available on request.
3. If grout pad mounting is used, add grout thickness to dimensions.

GATE DIMENSIONS IN INCHES

GATE SIZE	4	6	8	10	12	14	16	18	20	24
A	4	6	8	10	12	14	16	18	20	24
BC	7 1/2	9 1/8	11 1/4	14 1/4	17	18 3/4	21 1/4	22 3/4	25	29 1/2
D	9	11	13 1/2	16	19	21	23 1/2	25	27 1/2	32
E	4 5/8	5 11/16	6 7/8	8 1/8	9 3/8	10 7/16	11 5/8	12 1/4	13 3/8	15 1/2
F	9 1/8	11 3/16	13 3/8	16 1/8	18 7/8	20 15/16	23 3/8	24 3/4	27 1/8	31 1/2
G	8 1/4	11 7/8	14 1/4	16 1/4	18 5/8	22 1/4	24 1/4	26 1/4	28 3/4	32 3/4
H	6 1/4	7 5/8	8	8	8 1/2	10 1/2	10 1/2	10 1/2	11	11
J	1	1	1	1	1	1	1	1 1/8	1 1/8	1 1/4
M	3/4	7/8	7/8	1	1	1 1/8	1 1/8	1 1/4	1 1/4	1 3/8
N	8	8	8	12	12	12	16	16	20	20

PF-25W FLAP VALVE

1. Designed for use on pump discharge lines.



MACHINED IRON

RESILIENT SEAT IN COVER. MACHINED IRON SEAT BODY

BRONZE SEAT COVER & BODY

RESILIENT SEAT IN COVER. BRONZE SEAT IN BODY.

ALTERNATE SEATS AVAILABLE

GATE DIMENSIONS IN INCHES							
GATE SIZE	4	5	6	8	10	12	14
A	4	5	6	8	10	12	14
B	5 5/8	6 3/4	8	9 7/8	12 1/2	14 1/2	16
C	-	-	6	7 1/2	9 1/8	10 1/2	12
D	4 1/2	5 1/2	-	-	-	-	-
E	5 1/4	5 1/2	6	7 1/2	8 1/4	9 1/2	10 1/2
F	9	9 1/2	10	12 1/4	14 1/4	17	18 1/2
G	7	8 3/8	9 1/4	11 1/4	14	16 1/2	18 1/4
H	5 1/4	5 1/4	6 1/4	6 1/4	6 1/2	7	7 1/2
J	2	2 1/4	2 5/8	2 5/8	2 5/8	2 5/8	2 5/8
N	4 5/8	5 5/8	6 3/4	8 3/4	10 7/8	12 7/8	14 3/8
Q	3	3	4	4	4	4	4
R	6 1/2	8	9 3/8	11 3/4	13 7/8	15 7/8	17 3/8

PARTS LIST	
No.	Name
1	BODY (standard)
2	COVER
3	HINGE PIN
4	SPRING PIN
5	WASHER
6	FOLLOW RING
7	RING BOLT, NUT & WASHER
8	PIPE SEAL GASKET (compression gasket)

AUTOMATIC DRAINAGE GATE DISCHARGE PERFORMANCE CURVES

DRAINAGE GATES

CHART APPLICABLE FOR
WATERMAN F-10, F-50 AND PF-25 GATES.

